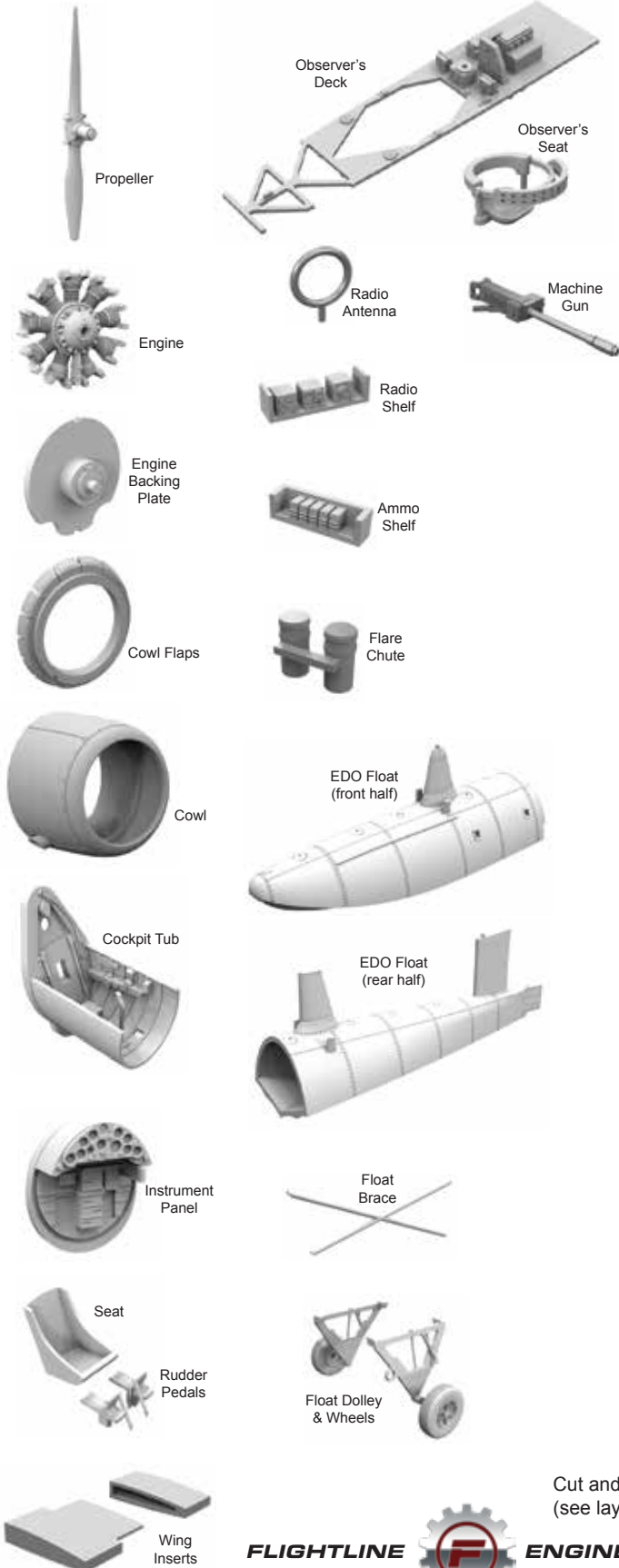
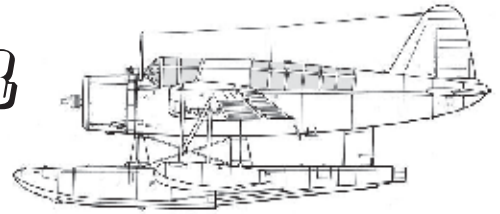


Instruction Sheet for the

# VOUGHT OS2U KINGFISHER

*Update Set* for use with the Monogram 1:48 scale kit



**To facilitate easiest installation possible, please read and understand all directions before assembly.**

1. With a sharp nipper tool, carefully remove all parts from their supports (these supports are necessary for the 3D printing process). Work SLOWLY and CAREFULLY. Always wear eye protection, as small support clippings may fly off. 3D printed resin parts can be glued with cyanoacrylate glue or epoxy glue.

2. All parts should be primed prior to painting. Acrylic primer is recommended.

3. If any print resolution lines are present on parts with large, smooth surfaces (such as cowls, etc.), part may be lightly wet sanded with 600 grit wet-or-dry sandpaper.

**Prepare Monogram Kit Parts:**



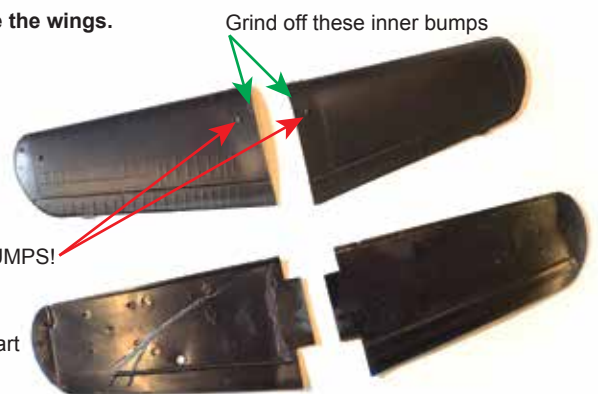
4. With a fine tooth razor saw, remove cowl and float from both fuselage halves.



5. Grind out all locator pins, bosses, etc., from inside of fuselage halves EXCEPT where noted.

DO NOT REMOVE THIS LONG LOCATOR PIN! (Right fuselage half only.)

6. Prepare the wings.

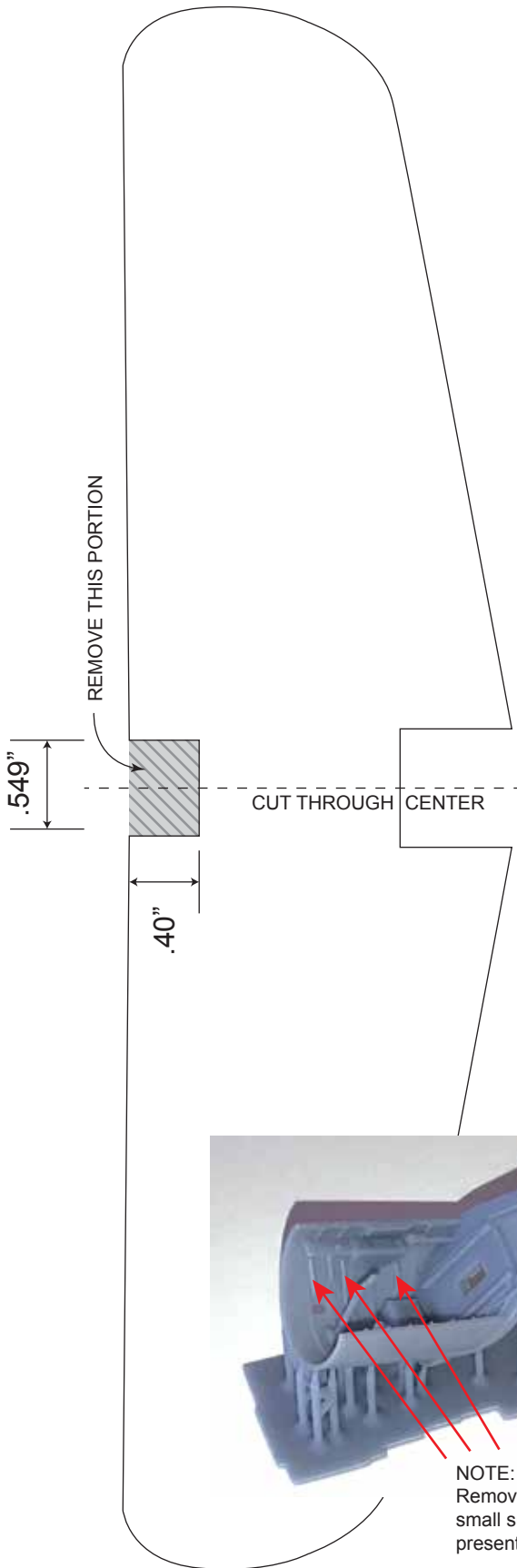


DO NOT REMOVE THESE OUTER BUMPS!

Cut and notch lower wing part (see layout next page).

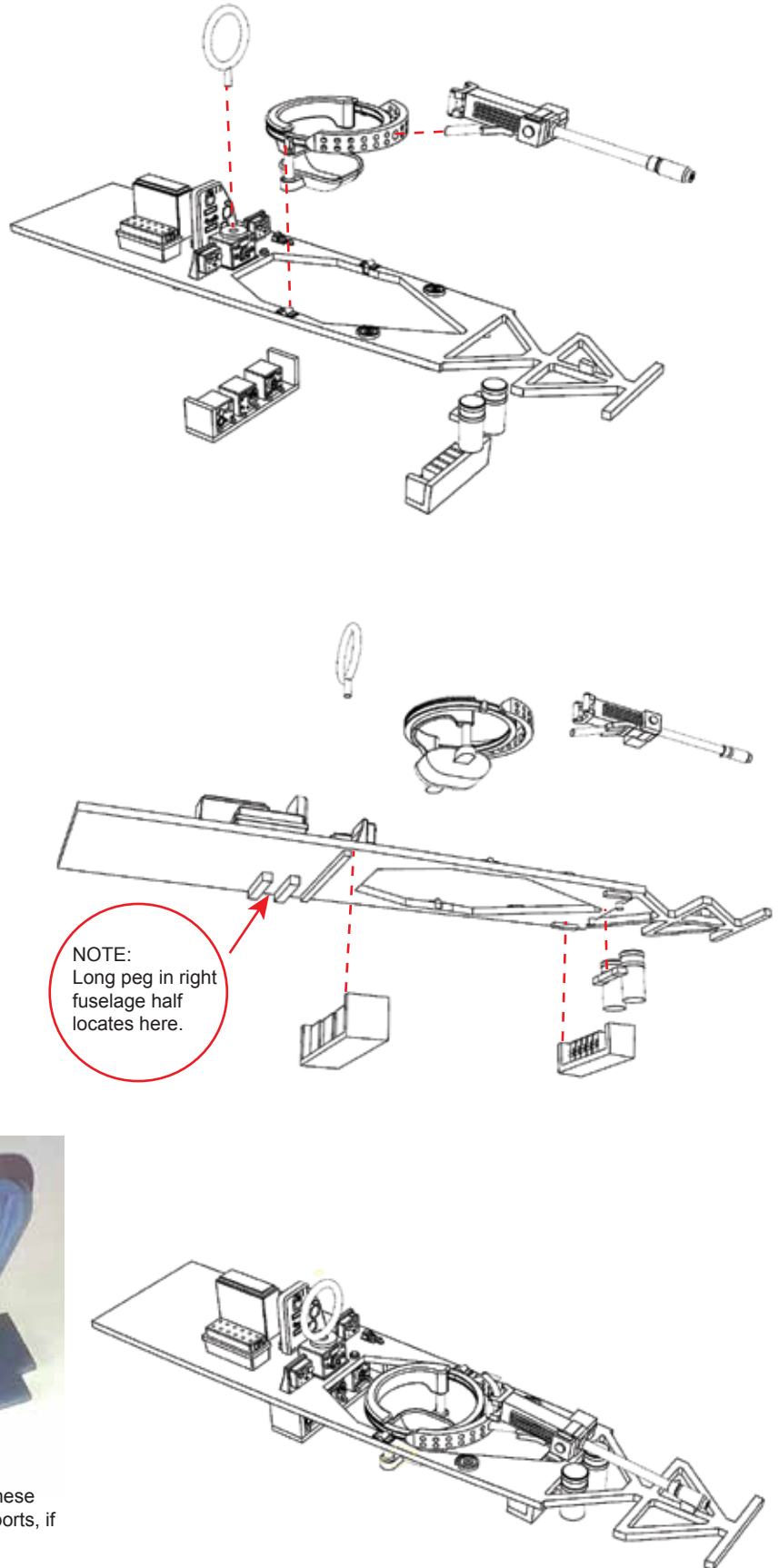


## 7. Observer's Station Assembly

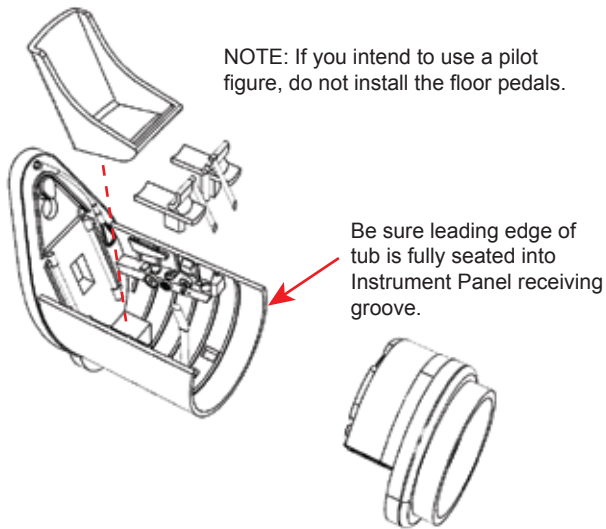


WING BOTTOM (Part 9)

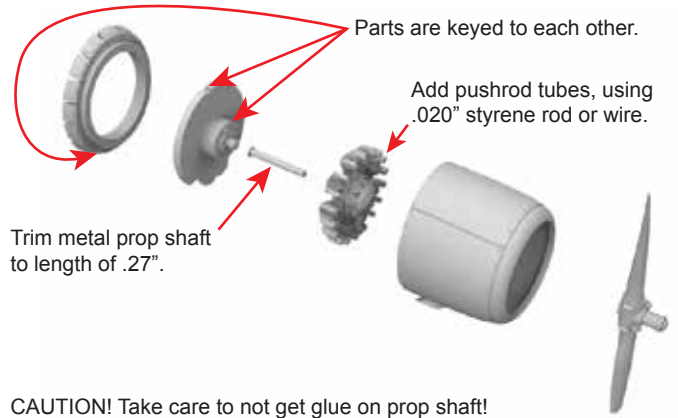
**ACTUAL SIZE**



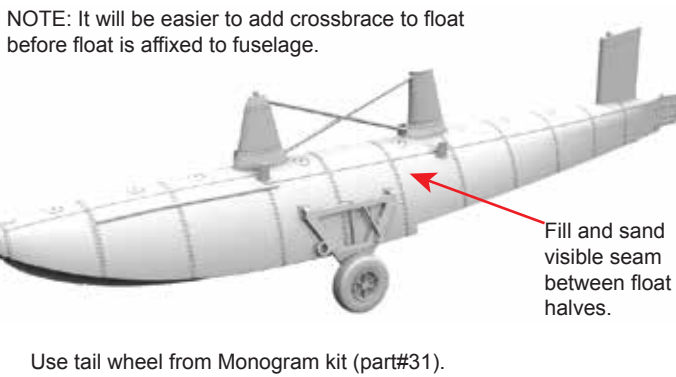
### 8. Cockpit Assembly



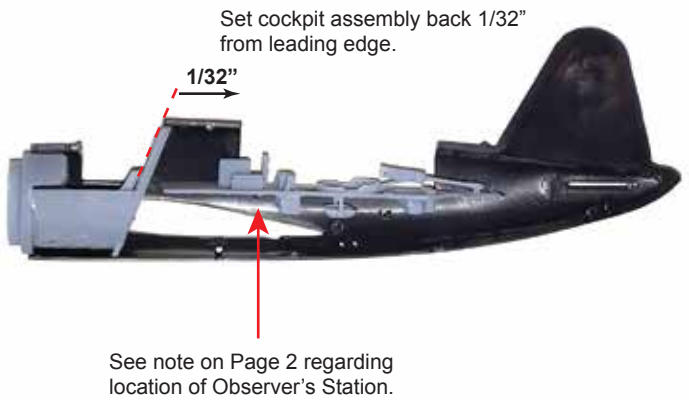
### 9. Cowl Assembly



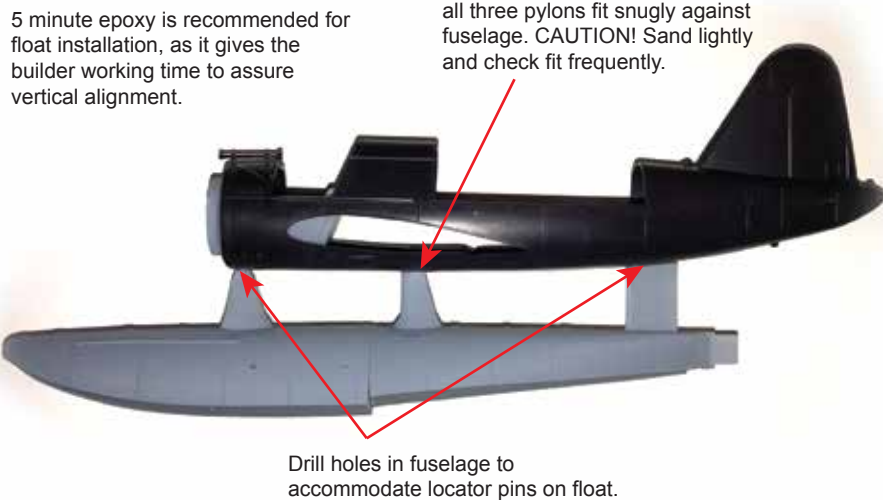
### 10. Float Assembly



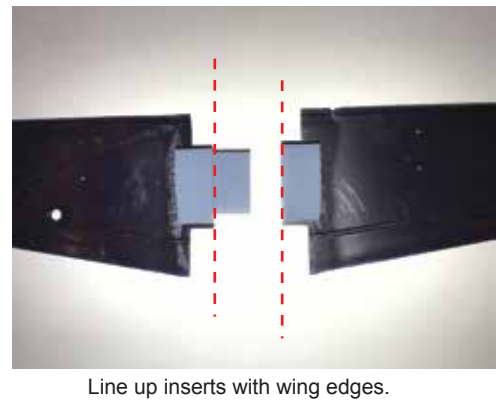
### 11. Cockpit Installation



### 12. Float Installation



### 13. Wing Insert Installation



Made in the USA by

